

Condensate Pump

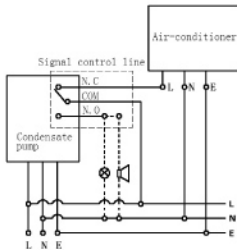
OPERATION MANUAL



V1.0



- ⑨. A high-level alarm switch should be wired into the cooling signal wire, to prevent the continued operation of the air conditioning unit in the event of the pump failing.



Power:

- (L) Live: Brown
- (N) Neutral: Blue
- (E) Earth: Green&Yellow

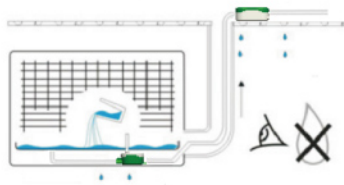
Alarm/volt free:

- (N.C.) Normally closed: Violet
- (COM) Common: Green
- (N.O.) Normally open: Red

Warning

Make sure the correct power cable to the power supply while 6-pin socket lead assembly.

- ⑩ Test pump operation by pouring water into evaporator tray. Check for leaks.



Warranty

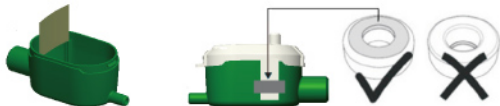
This warranty covers all arts with material or manufacturing faults. The buyer's only remedy is the replacement or repair of the defective arts. In no case can labour costs and any onsequential damage be cited as a basis for a omlplaint. Any returned units must be complete and ust be accompanied by a written list of the defects scertained. We are unable to accept any liability in case of nonconforming installation or noncompliance with the specifications or maintenance recommendations.

Maintance

- This pump like all mechanical equipment requires maintenance
- Every six months, the reservoir should be moved, taking care to clean the filter, float and reservoir thoroughly prior to reassembly. We recommend this is done in spring and in autumn, using an anti-bacterial wash.
- Take great care to replace the float with the magnet facing upward.

6. Installation

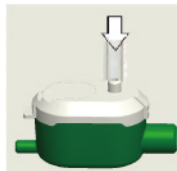
① Ensure float is positioned in reservoir with magnet uppermost, the filter is in place and the lid is clipped firmly onto reservoir.



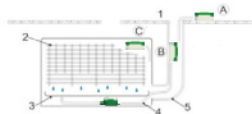
② Secure reservoir horizontally using velcro strips and for the inline reservoir use the inlet hose to connect firmly to drainage pipe.



③ Fit breather tube to reservoir lid.



④ Install pump drive unit above the ceiling where possible



- ① False ceiling
- ② Evaporator coil
- ③ Condensate drain tray
- ④ Vinyl tube
- ⑤ Conduit

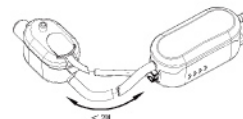
⑤ Anti-vibration assembly



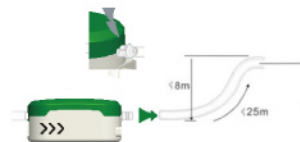
⑥ Note direction of water flow



⑦ Push the 9mm o/dx6i/d tube onto the reservoir and the pump. Secure with cable-ties. Ensure length is under 2meters



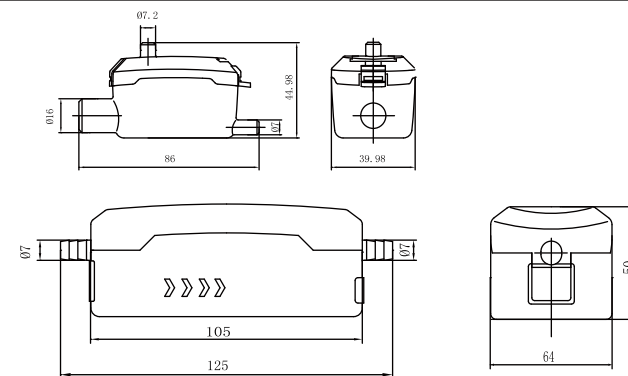
⑧ Connect your 9mm o/d x 6mm i/d vinyl discharge tube to the outlet barb on the pump and secure with a cable tie. Channel discharge tube to an appropriate drain. avoiding restrictions.



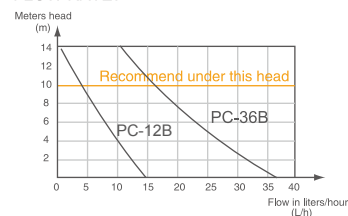
PEARL SPRING SERIES



DIMENSIONS 尺寸图:



FLOW RATE:



Model 型号	Performance(l/h@ Head)				
	0m	2m	4m	6m	8m
PC-12B	14	12	8	7	6
PC-36B	36	34	30	24	20

Model 型号	PC-12B	PC-36B
Voltage 电压	100-230V~/50-60Hz	100-230V~/50-60Hz
Suction lift 最大吸程	Max.2m(6.5ft)	Max.2m(6.5ft)
Discharge head 最大扬程	Max.10m(33ft)	Max.10m(33ft)
Rated 运行等级	Non continuous 非连续	Non continuous 非连续
Flow rate 最大流量	Max.12L/h(3.2GPH)	Max.36L/h(9.6GPH)
Tank capacity 储水箱容量	35ml	35ml
Mini splits up to 适用空调机功率	10KW(30,000btu/hr)	32KW(96,000btu/hr)
Sound level 噪音	<16dB(A)	<18dB(A)
Ambient temperature 使用环境温度	0℃~50℃	0℃~50℃
Power consumption 最大功率	3W	3W
Current intensity 最大电流	50mA	50mA
Safety switch 安全开关	NC 3A-250V	NC 3A-250V
N.W. 净重	Pump泵180g Reservoir水壶 70g	

Low noise	低噪音
High flow rate	高流量
Compact modern design	结构紧凑

Application 应用范围:
Ceiling Concealed Split systems 天花板机
Ducted units 空调管扣内装